

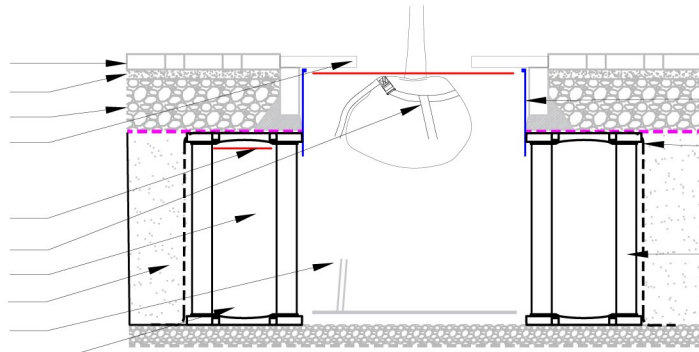
# Detail TreeParker system scale 1:40

## Paving elements for heavy traffic

- Paving, per project specification
- Aggregate fine 50 mm
- Aggregate base course 250 - 300 mm
- Tree grate 1500 x 1500 / 60 mm

## Remainder

- Airlayer between 30 up 80 mm
- Root Ball Anchoring for roof gardens GGB 120650
- Plantingsoil
- Backfill
- Steel mesh  $\varnothing$  8 mm gapsize 150 x 150 mm
- sub base aggregate 100 mm



## TreeParker system

- TRG Root guidance panel
- Geotextile 270 gr/m<sup>2</sup>
- TreeParker combigrd 150

## TreeParker unit 100

- TreeParker Frame + Decks
- TreeParker Posts, 1000 mm
- TreeParker Frames

